



ASIA PACIFIC

FORM & STRUCTURE INC.



follow the rule of earth



Company Presentation



**Waterproof
Wood Plastic
Composite Panels
WPC Construction
Material**

follow the rule of earth



PRODUCTION PROCESS



XCELL WPC PANELS Composite Decking Advantages

Environment Friendly

Wood like appearance

Durable, reduce solar reflection

Damp proof, waterproof and
corrosion-resistant

Barefoot friendly, anti-slip,
anti-static, anti-UV,

less cracking, less deforming

Painless, no glue,

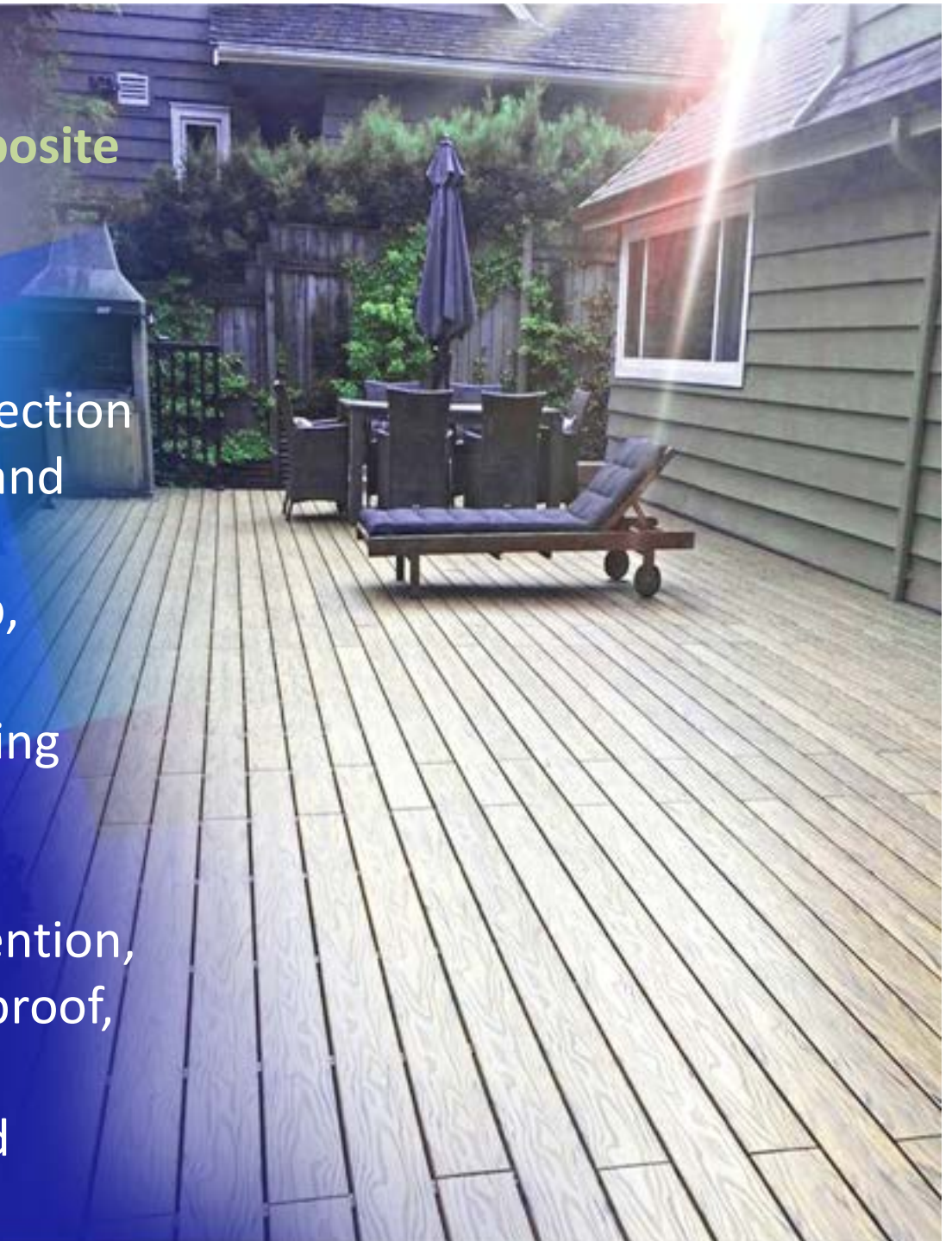
less maintenance,

no pollution Insects prevention,

ants prevention, mildew proof,

less rotten

Easy installed and cleaned



Our Factory

2008

Invested 13,000 M2 of Mainland in China for factory enlarged



2009

- New factory was be ready by Dec. 2009
- Expected Annual capacity : 12K Ton/year
- Obtained CE Certificate

Origin concept of WPC

Junk

Over developed

Missing rainforests

Greenhouse effect

A recycling solution
by green
manufacturing
processes

Junk



Rainforest
Lost



Timber
Root



What is WPC

■ Recycling

Made with 100% reclaimed plastic & recycling wood fibers



What is WPC

■ Particle

HDPE + Wood Fibers + UV-Inhibitors + Antioxidant +
Pigment + Selected Process Additives



What is WPC

■ Extruding



What is WPC

■ Forming & Cooling



What is WPC

■ QC



■ Packing & Shipment



CE & Test report

- Substituted for wood in Decking, Fencing, Railing & Trim
 - Eco-Friendly products – for environmental protection in fully recyclable material with ingredient
 - Enhanced Wear Resistance & low maintenance
 - Prevents rotting and splintering, water-proof and UV against
-

■ CE & Test report

CERTIFICATE OF CONFORMITY
UKTC

Certificate NO. TC0800216-1-CPD

Applicant: Doozer Co., Ltd.
Applicant Address: 2F-1, B Building, No. 627, Linan N. Rd., Zhongshan District, Taipei City 104, Taiwan

Manufacturer: Doozer Co., Ltd.
Manufacturing Site: Huzhou, Zhejiang Province, China

Product Name: Wood Plastic Composite Mosaic (WPC)
Model No.: 11mm, 32mm, 25mm, 38mm, 40mm

THE TEST REPORT
Technical Construction File
Reference NO./Rev: TC0800216-1-CPD
Codes/Standards Applied: EN 14041:2004
Date of Issuance: Jan. 5, 2012

Remarks:
This Certificate is Only Valid For The Equipment And Configuration Described, And In Conjunction With The Test Data Detailed Above.

Conclusion Of Assessment:
We Herewith Confirm That the Technical Construction File and Manufacturing, Inspection And Testing processes for Above Mentioned Equipment Comply With The Essential Safety Requirements Of Construction Products Directive 89/106/EEC Applied Codes And Standards.

Chief Assessor:  **CE**

UK Product Safety Test Centre Ltd.
ROSE B. H. LA BOND
DRUNKETOWN, CARSON, WILTSHIRE, UK, CPL 24W
info@ukpsc.org

SGS
Material & Engineering Laboratory-Taipei

TAF
Testing Laboratory
4586

TEST REPORT

Report No.: IFV-12-01302ZA
Page: 1 of 1
Date: APRIL 10, 2012

Applicant: DOOZER CO., LTD.
Address: 2F-1,B Building, District, No.627, Linan N. Rd., Zhongshan District, Taipei City 104, Taiwan (R.O.C.)
Supplier: DOOZER CO., LTD.
Sample Name: Wood Plastic Composite (WPC)
Structural Position: Wood Plastic Composite (WPC)
Sample Submitted By: DOOZER CO., LTD.(Jacky Lin)
Date of Sample Received: MARCH 05, 2012
Date of Testing: MARCH 05, 2012 - APRIL 09, 2012
Remark: The information mentioned in the above section is provided by Client (Exclude Date of Sample Received and Date of Testing)

TEST RESULT:

Test Items	Test Methods	Test Results
Density(g/cm ³ @23°C)	ASTM D791-08 Method A	1.126
Compressive strength (kg/cm ²)	ASTM D695-10 (V-1 3mm/min)	284
Flexural strength (kg/cm ²)	ASTM D790-10	254
Flexural modulus (kg/cm ²)	Procedure A	29592
Water Absorption (%) (23°C, 24hrs)	ASTM D570-99(2009e1)	1.48
Pull strength(kgf)	Refer ASTM (D1037-06a)(Remark 2.)	264

Remark: 1. Density, Compressive strength, Flexural strength, Flexural modulus, Water Absorption test is accredited by TAF.
2. V-1 3mm/min - Depth-24mm - Screw was provided by the client.
--- 0 0 ---

Colin New
Signed on Behalf of
SGS TAIWAN LTD.

The value of required specifications are for reference only.
Certification judgment is the Applicant's final decision.

These analyses were performed under the responsibility of the client. The test report shall not be used as evidence of compliance in any jurisdiction without the prior written permission of SGS TAIWAN LTD. The test report shall not be used as evidence of compliance in any jurisdiction without the prior written permission of SGS TAIWAN LTD. The test report shall not be used as evidence of compliance in any jurisdiction without the prior written permission of SGS TAIWAN LTD. The test report shall not be used as evidence of compliance in any jurisdiction without the prior written permission of SGS TAIWAN LTD.

■ ISO & JIS Certification





Classic Series



Natural Wood Grain



Strengthening Series



Flexible Knee Pad Series

Compared With The Four Series Of Products, The Antibacterial Effect Is Increased, The UV Resistance Is Improved, And The Color Is Not Easy To Fade!

Four Main Colors Of Beautiful Wood



African Ebony



Walnut



California Redwood



Burmese Teak

Synchronously Popular With Japan And Australia, The Color Is More Saturated And More Stable



Main Application: Outdoor Place

Decking board, Plank, walk path, bridge sidewalk(solid or hollow)

Pole material, Handrail, railing, fence, partition, scale board

Flower pots board, Flower pot, tree pool, trash can

Decoration board, Outside wall cladding decoration board,

sun shade, shutter , Bench slip, Rest chair, backrest slip, leisure table surface, Sign board, Sign board, indicator, billboard, Structural material, Post, beam, keel(fittings available)

Integrated uses, Flower frame, gallery, gazebo, terrace, garage

Applications

Outdoor Decking / Fencing / Railing / Trim

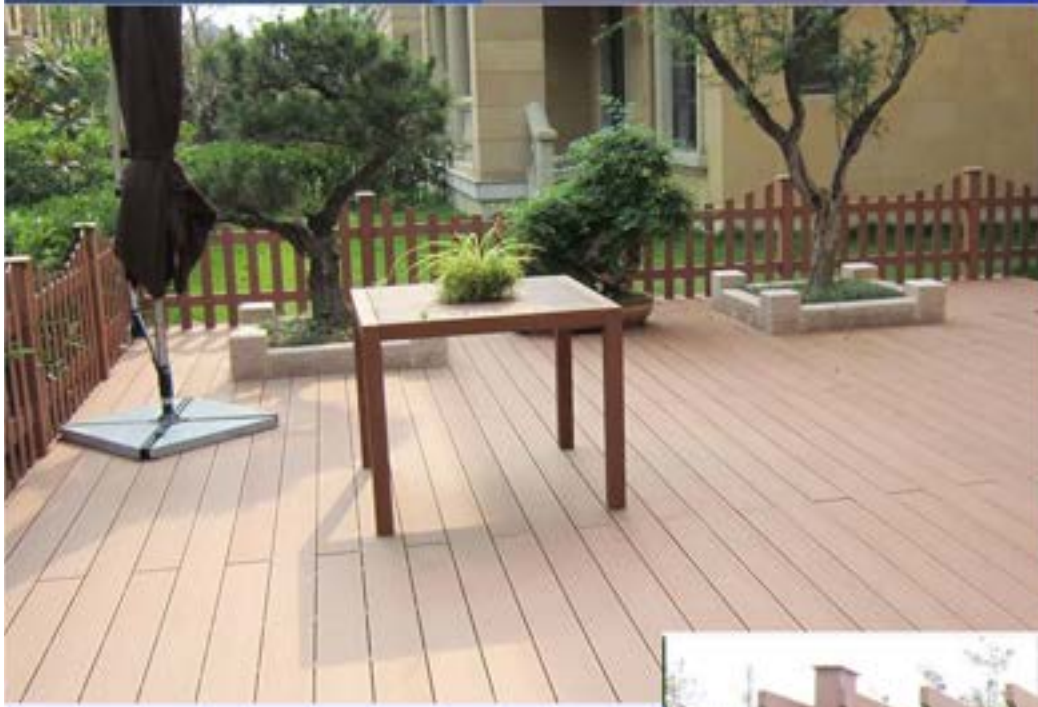






WPC
XCELL PANELS





 WPC
XCELL PANELS

WPC XCELL PANELS









Classic Series

Series No.	Profile	Size (mm / cm)	Weight (kg / m)
H023098 - A		2.3 x 9.8 (A)	2.57
H023098 - B		2.3 x 9.8 (B)	2.50
H023147 - A		2.3 x 14.7 (A)	2.94
H023148		2.3 x 14.8	2.63
H023250		2.3 x 25.0	4.41
H025075		2.5 x 7.5	1.77
H025145		2.5 x 14.5	3.35
H025300		2.5 x 30.0	6.70
H028145 - A		2.8 x 14.5 (A)	3.20
H028145 - B		2.8 x 14.5 (B)	3.13
H028155		2.8 x 15.5	3.55
H030100		3.0 x 10.0	2.45
H030150		3.0 x 15.0	4.00
H035035		3.5 x 3.5	1.35
HR038038		3.8 x 3.8	0.98
H038038		3.8 x 3.8	1.27
H038070		3.8 x 7.0	1.95
H038088		3.8 x 8.8	2.77
H038138 - A		3.8 x 13.8 (A)	4.14
H038138 - B		3.8 x 13.8 (B)	3.97
H040140		4.0 x 14.0	2.08
H040200		4.0 x 20.0	7.07
H043150		4.3 x 15.0	3.95
H048143		4.8 x 14.3	3.50
H050150		5.0 x 15.0	4.83
H050200 - A		5.0 x 20.0 (A)	5.12

Classic Series

Series No.	Profile	Size (mm / cm)	Weight (kg / m)
H050200 - B		5.0 x 20.0 (B)	7.84
H060120		6.0 x 12.0	4.45
H088088 - A		8.8 x 8.8 (A)	8.45
H088088 - B		8.8 x 8.8 (B)	5.63
H088198		8.8 x 19.8	15.25
H095300		9.5 x 30.0	12.60
H105105		10.5 x 10.5	11.62
H118118		11.8 x 11.8	14.04
H140140		14.0 x 14.0	18.18
H158158		15.8 x 15.8	19.76
M030048		3.0 x 4.8	0.73

Natural Series

Series No.	Profile	Size (mm / cm)	Weight (kg / m)
H023150		2.3 x 15.0	3.70

Strength Series

Series No.	Profile	Size (mm / cm)	Weight (kg / m)
H024150		2.4 x 15.0	3.70



Redwood

Series No. : H023150
 Size : 2.3 cm x 15.0 cm
 Weight : 3.70 kg/m



Teak

Series No. : H023150
 Size : 2.3 cm x 15.0 cm
 Weight : 3.70 kg/m

* The product weight and the size have slightly the difference because of the surface treatment, the above data for the reference basic value.

WPC of 3 Feature Series

- Classic Series
- Natural Series
- Strength Series

Classic Series



Natural Series



Strength Series





8912





GRASS



Four Season Grass

— Product Advantages



Evergreen Evergreen

Long-Term Exposure To Sunlight
And Rain Can Still Maintain The
Original Color Of The Product



Natural Feeling

Flexible Material
Close To The Texture Of Outdoor
Turf. Greening Your Living
Environment



Worry-Free

Excellent Grip And Cushioning
Greatly Improve Personnel Safety
And Reduce Injuries





— Feature Of Product



- **Machinable Good Plasticity**, Can Bend Radians And Curves According To Any Bend, And Attach It To The Surface Of The Article (Such As Sofa, Doll, Irregular Terrain, Etc ...)
- **Maintenance- Free** No Watering, Fertilization, Trimming, No Need To Worry About Pests; Long-Term Use Can Reduce Maintenance Costs
- **Good Durability** , Low Wear And Tear, No Fear Of Sun And Rain, High Density, Good Elasticity, Can Quickly Recover After Heavy Pressure





Model: TU03



Material: PA | Base Fabric: PP
Color: Dark Green
Grass Height: 15 Mm
Size: 1m X 5m / 7.5 Kg, 2m X
10m / 30 Kg
Line Pitch: 3/16 Inch
Weaving Pitch: 24 (Needle 10
Cm)

Model: TU04



Material: PE | Base Fabric: PP
Color: Yellow-Brown Green
Grass Height: 35 Mm
Size: 1m X 5m / 12.6 Kg, 2m X
10m / 49 Kg
Line Spacing: 3/8 Inch
Weaving Pitch: 17 (Needle 10
Cm)

Model: TU05



Material: PE | Base Fabric: PP
Color: Emerald Green
Grass Height: 50 Mm
Size: 1m X 5m / 12.5 Kg, 2m X
10m / 52 Kg
Line Spacing: 3/4 Inch
Weaving Pitch: 20 (Needle 10
Cm)



Model: TU01



Material: PA | Base Fabric: PP
Color: Emerald
Grass Height: 10 Mm
Size: 1m X 5m / 10.5 Kg, 2m X
10m / 44 Kg
Line Spacing: 3/16 Inch
Weaving Pitch: 25 (Needle 10
Cm)

Model: TU02



Material: PE | Base Fabric: PP
Color: Emerald Green
Grass Height: 50 Mm
Size: 1m X 5m / 10 Kg
Line Pitch: 3/4 Inch
Weaving Pitch: 20 (Needle
10cm)

Model: TU03



Material: PA | Base Fabric: PP
Color: Dark Green
Grass Height: 15 Mm
Size: 1m X 5m / 7.5 Kg, 2m X
10m / 30 Kg
Line Pitch: 3/16 Inch
Weaving Pitch: 24 (Needle 10
Cm)

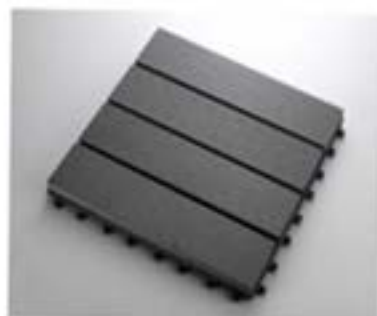


DIY FLOORING



BEAUTIFUL WOOD DIY FLOOR

Fans Of Home Gardening Can Easily Display And Plant All Kinds Of Potted Plants After Installing "Beautiful Wood DIY Floor" On The Balcony Or Sky Garden Floor. With The Beautiful Wood DIY Floor, All Kinds Of Foliage Plants And Flowers Are More Vital! You Can Also Create A Perfect Green Space For Yourself, And Create A Relaxing Secret In The Urban Jungle.



Model: DIYCE403030

Color: African Ebony
Dimensions: L30 X W30 X
H2.3 Cm
Weight: 1.35 Kg / Pc



Model: DIY9595119

Color: Gray + Brown
Size: L30 X W30 X H2.3 Cm
Weight: 1.3 Kg / Pc



Model: DIY9595111

Color: Gray
Size: L10 X W10 X H2.3 Cm
Weight: 0.14 Kg / Pc



Model: DIY303038

Color: Green
Size: L30 X W30 X H3.8 Cm
Weight: 0.38 Kg / Pc



OUTDOOR LEISURE SEAT

Outdoor Leisure Seat

Reinforced Series Improves Structural Strength

And Is More Durable The Choice Of "No Limit" And The Inking Of Details Have Created The Infinite Possible Time For Outdoor Building Materials .

It Is Not Only A Physical Change, But Also The Brand Value Of Doozer After Years Of Polishing. If There Is No Beauty, It It's Just An Object.

Reinforced Series-Outdoor Leisure Seats Are Not Only Manifested In Materials, Technology And Aesthetics In The Process Of Design, But Also Practical.

Unlike The New Ideas In The Past, They Can Be More Closely Integrated With The Living Environment. This Is Doozer's Belief That It Will Upgrade Your Aesthetic Vision.





Compare	DP-1001 General Pure Plastic Seat	DPS-1001 Enhanced Series Seat
Image	 A park bench with a dark green metal frame and light brown wooden slats for the seat and backrest.	 A park bench with a light blue metal frame and light-colored wooden slats for the seat and backrest.
Colour	<p>Most Of The Wild Green Parks, Amusement Parks, And Outdoors See The Seats Of This Color, Which Are Less Innovative And Conservative, And The View Is Exhausted, Making It Difficult To Create A Unique Spatial Atmosphere.</p>	<p>Niagara Blue Has A High Design Texture With A Special Color Scheme. The Earth Lime Has A Low Chroma, And The Cold Color Of Niagara Blue Can Bring A Feeling Of Calmness And Relaxation.</p>





WPC
XCELL PANELS

CONTACT US:



ASIA PACIFIC

FORM & STRUCTURE INC.

OFFICE ADDRESS

Asia Pacific Form and Structure Inc
Unit 2208 Prestige Tower, Don F. Ortigas Ave.
Ortigas, Pasig City

+632-477-9640

+632-654-6114

+632- 998-5201

Monday - Friday 9:00 AM to 6:00 PM

FOLLOW US:



www.aspacform.com



[2020_aspac_form_structure](#)



[Asia Pacific Form and Structure Inc.](#)



[asiapacificform](#)



[Asia Pacific Form and Structure Inc.](#)



[ASIA PACIFIC FORM & STRUCTURE INC.](#)



[ASPACFORM](#)



[ASPACFORM](#)



thank
you!